

Society Section, page 7

## Children's Chorus Gives Concert In Memorial Hall, Bringing Close To Girl Scout-Boy Scout Drive

Singing Children Gowned Strikingly March to Places  
on Gray-Tiered Stand; Colored Lights Flood  
Platform and White Backdrop.

By MERAB EBERLE

THE children's chorus of the Inland Manufacturing company brought a close to the Girl Scout-Boy Scout drive for funds with a benefit concert presented Friday night in Memorial hall.

The concert was a striking affair. Considerable time had been spent in devising the setting; the children were tastefully gowned, and the concert presented was one invested with much charm since children's voices carry a sweet, fresh tone which is never to be duplicated by the adult voice.

Girls were gowned in blue in the mid-range of the color. At their throats were white again, white accented the cuff of their brief puffed sleeves. Full skirts fell to the floor. Ribbons of like blue banded their hair. The boys were dressed in long black trousers, black coats and white shirts. Girls and boys marched in by the two opposing front doors of the auditorium; came to the small raised dias where organ and piano stood on dark carpeting; stepped up gray stairs to the platform and there mounted gray tiers. As the chorus stood in place colored lights played over the children; the green plush draperies were drawn and a white background, tinted by changing lights, was revealed.

Richard Westbrook directed the chorus and gained in several instances some charming effects. There are those who like to see a chorus carry scores—especially such picturesque scores as those used last night. We feel, however, that any dependence on a score leads to less authoritative presentation. It detracts from spontaneity; is prone to destroy the finer rhythmic effects.

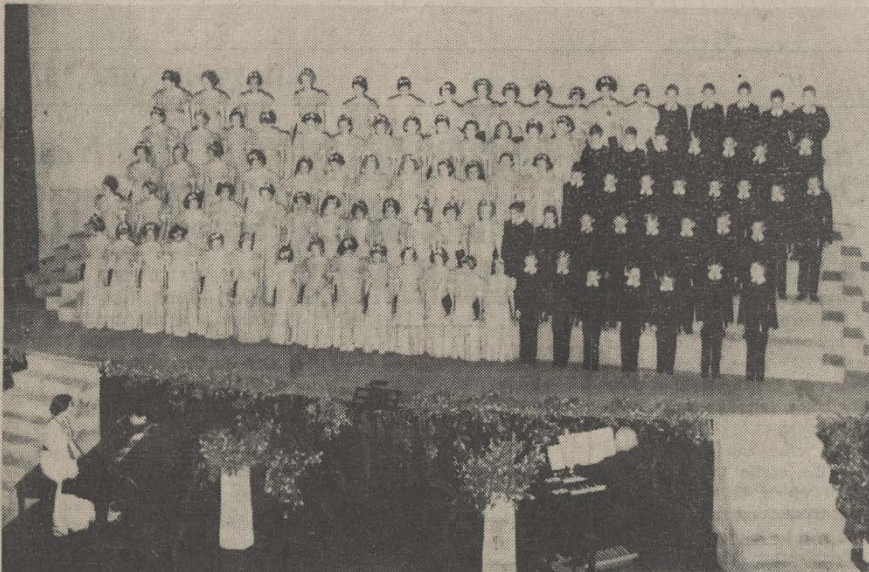
The program opened with Victor Herbert's "March of the Toys," William's "Song of the Pedler" and Hahn's "The Green Cathedral." Later McIntyre's "Starlight," Mozart's "Lullaby" and Johann Strauss's "Blue Danube," were interpreted. To both Mr. Westbrook and the Inland Manufacturing company many compliments are due. To Mr. Westbrook because in one season he has built a pleasing singing group out of raw material, and to Inland Manufacturing company, because it is sponsoring the choral group. We feel that industry must take the place of monarchs of old in promoting the fine arts.

Miss Mary Werner, at the piano and Urban Deger, at the organ, accompanied the chorus.

Louan Cuni, a child singularly gifted in the art of dancing presented tap selections. She has a far from usual amount of grace, poise and the sense of rhythm.

The Dayton Journal, page 2

### Inland Chorus Sings for Benefit of Scout Drive



At a concert given at Memorial hall Friday night to aid the campaign being conducted by the Boy and Girl Scouts, these 100 children who comprise the Inland chorus made their

first public appearance. They are the children of employees of the Inland Manufacturing company. They are shown on the giant steps erected on Memorial hall stage after they had marched into the hall.

SUNDAY, JUNE 6, 1937

## Dayton Has New and Novel Children's Chorus At Inland

BY VIRGINIA D. STURM

COMES into the musical limelight of Dayton another organization which will gladden the hearts of the musical elect and also occasion considerable notice to Dayton for the novelty of its physical aspects.

It is the Inland children's chorus which made its Dayton debut on Friday night in Memorial hall under the direction of Richard Westbrook.

There was a certain amount of excitement with the appearance of the chorus for the first public concert was under the sponsorship of the Dayton Boy and Girl Scouts, and marked the end of the drive for the funds which will carry them along for another year.

In this column the musical aspects of the chorus should have the priority right over all other comment. Be that so, one can't possibly have space sufficient to extol the benefits and merits of such a chorus as the Inland children's. The good being accomplished by the training of this group of a hundred youngsters is very valuable to them, to the firm whose name the chorus bears, and to the families who hear about the music, and then hear the concerts which the youngsters will be singing from now on.

Another demonstration of high culture rearing its head!

Richard Westbrook has shown clearly his ability in a director capacity before, by the training of the Westbrook Singing Boys, but the Inland children are younger, and then a mixed chorus of children's voices is a delightful experience.

The programmed numbers included Victor Herbert's "March of the Toy Soldiers"; Williams' "Song of the Pedler" and Reynaldo Hahn's "The Green Cathedral"; McIntyre's "Starlight"; Mozart's "Lullaby" and a charming transcription of "The Beautiful Blue Danube" by Johann Strauss.

The Boy and Girl Scouts joined in with the chorus to sing "Marching Along Together," and this they did with a genuine relish.

Mary Werner plays the piano accompaniment with Urban Deger playing organ interludes.

Little Louan Cuni danced a tap rhythm to the tune of "Marching Along Together" and received many recalls.

And now comes the descriptive bit about the eye-compelling charm of the chorus. The girls were gowned in delicate blue frocks of quaint design with hair bands to match, while the boys were in Eton college suits, and the chorus made a stunning picture.

When the intermission arrived the children left the stage in double lines into the audience, and the girls handled their long frocks with ease and grace of movement, and we found ourselves loathe to let these very lucky youngsters leave the stage.

Lucky because they have the resources of the Inland back of them and the talents of Richard Westbrook before them.

We hope that we may anticipate concerts by the Inland children's chorus several times each season, at Christmas and Easter particularly.